

# Unlock the Power of the Sun

**Net Zero Today! No Need to wait till 2050.**

**TIPA – TOTAL INTERNAL PHOTONIC ABSORPTION**  
The Patented Global Technology with Global Market applications.



# Critical Concerns our Planet Faces:

## Problems

Increased Energy Demands

Cooling

- Quantum Computing
- AI & Cloud Computing
- Self-Driving Technology

## Solutions

Carbon Neutral Energy

Energy Security

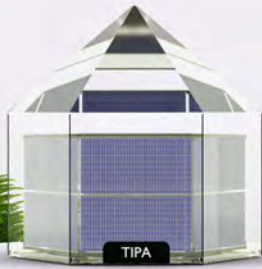
EV Transition

Decentralised Power

Low Cost Power

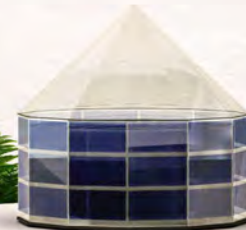
## TIPA (61W)

The novel and uniquely designed dome on TIPA allows it to capture light from all directions and project it evenly onto the cells. More reflection, more light, thus more electricity.



## TIPA ROSETTE (300 – 700W)

TIPA ROSETTE module captures solar energy through a multifaceted architecture, akin to the petals of a rose, and utilises a unique combination of bifacial solar cell strips, a mirror, and a dome within an inert atmosphere to optimise light absorption and conversion to electricity.



**LOWEST  
COST  
PER WATT**



**Solar power with higher power density & less land.**

TIPA poles can range from 3m to up to 50m.





By retrofitting just 2% of the 350 million poles worldwide, we can achieve Net-Zero emissions.

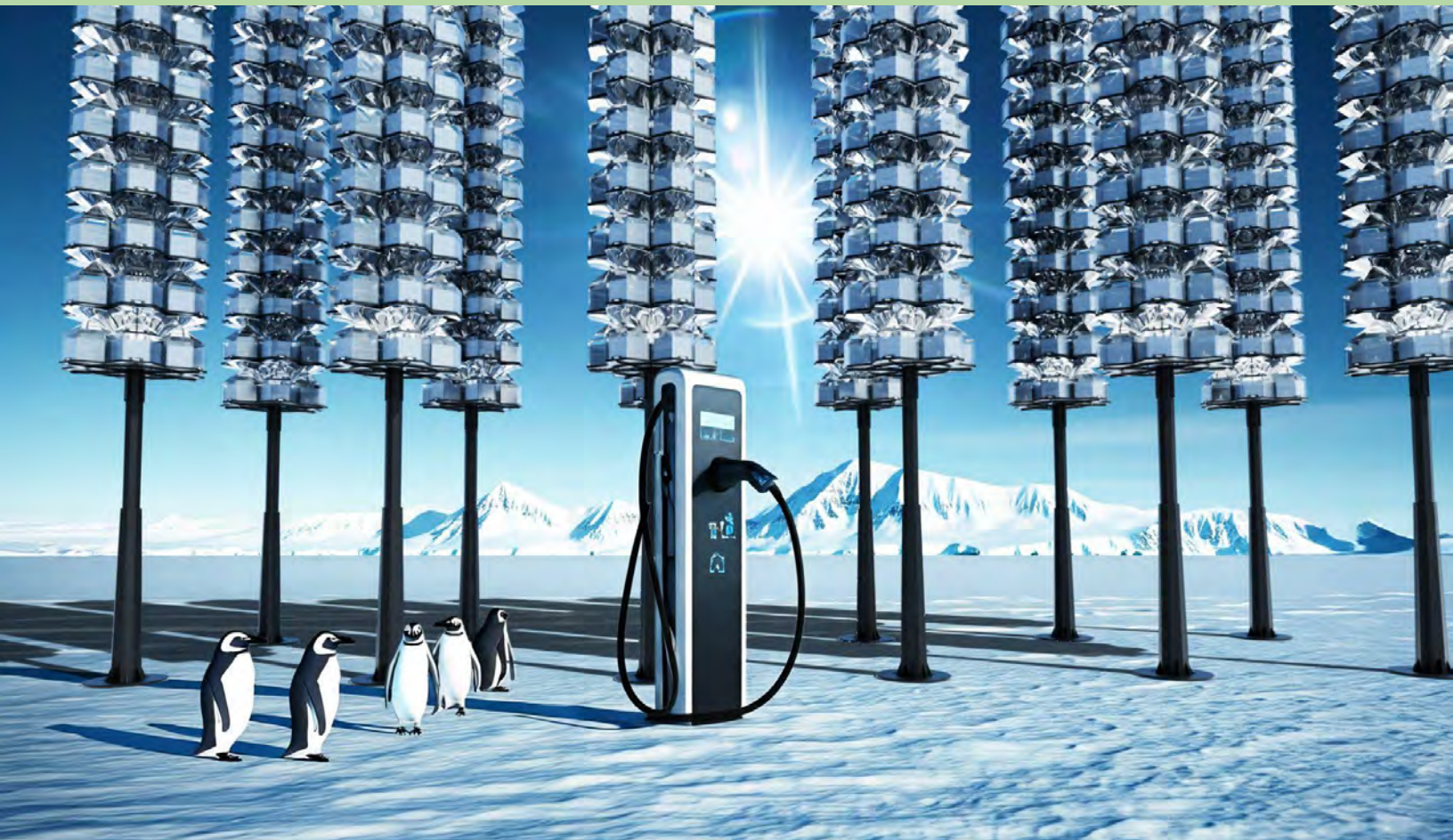
Retrofitting is possible on streetlight poles and every cell phone tower.



*Fact:  
Vertical Solar farms with 10 – 30  
times more generation per area  
(depending on height of pole).*



**Power anywhere you need it and fully transportable.**



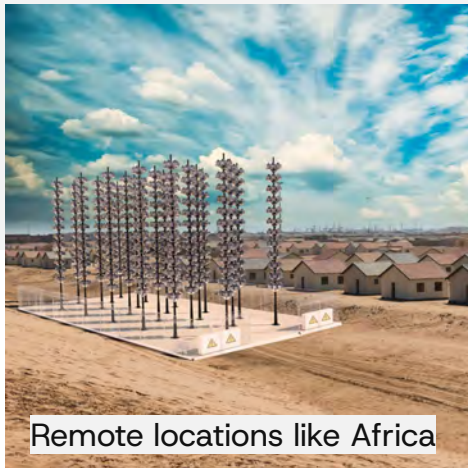
Want to drive from Pole to Pole, no problem, TIPAs can be installed anywhere there is sun and TIPAs Rosette models have the power density to charge EV cars anywhere, anytime.





# Use Cases

**NET ZERO**  **TODAY, NOT TOMORROW!**



## Energy Security

Storms, wind, power stations down. No problem. TIPA can be rapidly deployed and taken down.

Power for mobile health camps, power in rural villages in developed countries, power of the sun.

**NET ZERO TODAY!  
NO HYPERBOLE – NO BULLSHIT.**

## Why choose TIPA over flat solar panels?

Lightweight, (lighter than flat solar panels)

Lower cost per watt than any flat solar panel

Uses traditional inverters and solar components

Uses standard solar cells

Last 25–30 years

More power per area than any other PV technology



[www.tipasolar.com](http://www.tipasolar.com) | [hello@tipasolar.com](mailto:hello@tipasolar.com)

The Future of Solar is here.

